

Sleigh Courier



The Samoyed Club Inc

Spring 2008



Samoyed Collectible Postcard c1913

Read about this and other Samoyed collectibles on page 9

Inside this issue

	Page
Reports	3
Dates to Remember, New members	4
SCI Open Show	5
Snow Dogs Match Day	8
Samoyed Collectibles (Part 1)	9
NZ Ch Sikandi Silva Joker (Imp Aust)	14
Samoyed Successes at the National (Part 2)	15
Vale	32
Dog Show Disease	33
2 nd World Samoyed Meeting	34

Reminder

**Deadline for Christmas 2008 issue ~
8 December 2008**

Officials and Committee Members 2008

Life Members:	Una Gibson Gary Carleton Lyn Carleton Paddy Watts
Patron:	Noel Wilson
Vice Patrons:	Irene Allison Lauren de C James
President:	Jo-Anne Hawkins (06) 876 6560 kimchatka@xtra.co.nz
Vice President:	Lynne Barr 4 Christopher Way Paparangi, Wellington (04) 477 1097 lynne@angara.co.nz
Secretary:	Anita Shugg 136 Waitohu Valley Road R D 1, Otaki 5581 (06) 364 5785 k.a.shugg@clear.net.nz
Treasurer:	Simonne MacMillan (06) 329 2424 S.MacMillan@ucol.ac.nz
SamCare Coordinator:	Anita Shugg (06) 364 5785 k.a.shugg@clear.net.nz
Committee:	Simeon Copsey Lorraine Fothergill Millie Hayward Lauren James
Trophy Steward:	Lorraine Fothergill 134 Valley Views R D 4, Palmerton North (06) 354 0534 yorkrose@xtra.co.nz
Points Steward	Lynne Barr (04) 477 1097 lynne@angara.co.nz
Magazine Editor:	Lauren de C James 11 Kiwi Crescent Tawa, Wellington 5028 (04) 232 4091 kievsams@hotmail.com
Hon. Veterinarian:	Ian Schraa Kapi Mana Veterinary Hospital 224 Main Road Tawa, Wellington
Hon. Auditor:	Gordon Conning Naenae

Membership Fees 2008

Subscriptions are due annually on 1st January each year.

Single	\$20.00
Double	\$24.00
Junior (under 17)	\$10.00

The "Sleigh Courier" is published four times a year: Autumn, Winter, Spring and Summer.

A copy of magazine is available to members via email. Please contact Editor for details.

**Deadline for next issue:
Monday, 8 December 2008**

Advertising Rates

Full Page (black & white)	\$15
Half Page (black & white)	\$ 8
Sam Ads	\$ 5
Breeders/Stud Directory	\$ 5
Mating and Litter Notifications	\$ 5
Vales	Free

NOTE: Colour advertising is available on request. Please contact Editor for prices.

Clubs and Groups

Auckland Provincial Samoyed Association

Karla Magnus
P O Box 105
Katikata 3063
(07) 549 2122
kimskayanz@clear.net.nz

The Dominion Samoyed Club

Carol Fleming
Burnham Road East, Burnham
Christchurch
(03) 347 6738
murmansk@paradise.net.nz

ANZSAMS

Australia / NZ Samoyed email group:
<http://groups.yahoo.com/group/ANZSAMS>

The Spitz Breeds Club

Vivian Douglas
471 Muhunoa East Road
Ohau
Levin
06 367 3327
nuiinu@xtra.co.nz

Secretary's Report

The Open Show in August went well.

I would like to thank the people that donated items for Lorraine to wrap and give as prizes. The trophy table looked lovely as always. We had Mystery items, all nicely wrapped, for the stake prizes -. It was like Xmas after the show, everyone opening up their presents to see what they got! LOL.

We only had a small entry of 20 dogs. Unfortunately, this seems to be common at all dog shows lately. Maybe because of the cost of petrol? It would be helpful to know 'what shows people would be prepared to travel for when planning our 2009 shows.

Our Annual Snow Dog Match will be held in Levin this year, rain or shine. There are lots of large trees for shade and plenty of room to set-up umbrellas or gazebos, picnic blanket, etc.

This is a great fun day. Summer should be here! LOL. Practise with your young dog or bring your pet for an outing and be sociable. Meet other pet owners and breeders; learn more about your dog or ask questions.

We are trying to get enough prizes for everyone to take home something to remember they Funday out

Hope to see you all there.

Anita Shugg
Secretary

Editor's Report

Included in this magazine is a letter from the Samoyed Club of Slovakia announcing that the club would be hosting the 2nd World Samoyed Meeting in Slovakia in October 2009. Speakers include Brian Harris of New Zealand (Nikolaevsk). The title of his address 'Lets get rid of the Samoyed standard' could be considered somewhat inflammatory!

It needs to be made clear to the organising club whether or not Brian's address has the support of any of the three NZ breed clubs.

Many thanks to Simeon Copsey for photos of the Open show.

Lauren de C James
Editor

SamCare

Mintie and Amy visited me recently. Mintie looks really good. Any breeder would be proud to see his condition as a seven year old in a pet home. Amy

looks funny but really nice in the clip. They have clipped her like a Bichon.

A very happy ending for Amy and Mintie.



Aaron has sent regular reports on their progress:

"Amy has fitted in well. Every now and then she and Mintie have a spat but we send them outside to sort it out and they come back better mannered.

She's been sleeping on the sofa and Samara's bed. Samara has been walking her when I take Mintie for a walk and am going to start brushing her to get her used to the brush and for Samara to do it.



I started trimming Mintie's paws last night while they were asleep as they were really tired out after the walk. I will send more pics and updates as we go.

Thank you very much for the lovely additions to the family. By the way she's not worried about either the cat or the rabbit."

Anita Shugg
SamCare Coordinator
☎ (06) 364 5785
k.a.shugg@clear.net.nz

Dates to remember

Snow Dogs Match	Sunday, 23 November 2008
Deadline for Summer issue:	Monday, 8 December 2008
2009 Championship show:	Monday, 1 June 2009

Watch out for these upcoming features

Summer/Christmas 2008 issue

National Show Samoyed Successes (Part 3) – Sweepstakes, Obedience and Agility
Popularity of the Breed
Samoyed Collectibles (Part 2)

Magazine suggestions

- If there are any burning issues you would like to see raised in this magazine please let me know.
- Do you have any suggestions about content?
- Is there a particular topic you would like to see featured in the magazine?
- Are there any features that you dislike – all feedback welcomed.
- Any photos for “Guess Who” section would be appreciated.
- Any photos of Samoyeds in engaging poses, caught in the act of some mischievous prank, or whatever, always welcome.

As always contributions - poem, quiz, cartoon, article, kennel ad, or vale notice – are most welcome.

Send all contributions to the editor at: 11 Kiwi Crescent, Tawa, Wellington 5028
or email to: kievsams@hotmail.com

Welcome to the following new members:

Aaron Bell - now owns Minty and Amy ex SamCare
Michelle Hampton
Jenny Huriwai
Gary Lane
Shuet-Fong Lee

May your membership be a long and happy one. We look forward to meeting you at future events.

Guess Who

Question: Who featured in photo one on page 22 of the Winter 2008 issue?

Answer: Rob Guest (wearing the Micky Mouse t-shirt) and his pop group the In-Betweens pictured with the editor's Ch Voinaika Gdanis. Sadly, Rob Guest died on 2 October this year.

Question: Who featured in photo two on page 22 of the Winter 2008 issue?

Answer: I was hoping to get some responses to the second photo. It was in the group of photos from Bridget Smeeton and the only information provided was that it was taken at the Central Hawkes Bay Championship show in April 1971.

Photos for this section predating 2000 would be most welcome – either original photos or in jpg or tif format. Please send to editor.



The Samoyed Club (Inc) Open Show

Left column:

Best in Show:

NZ Ch Kalaska Wild Excitement At Oscarbi
(Imp Aust)

Reserve Best in Show:

NZ Ch Kalaska Astro Boy At Oscarbi
(Imp Aust)

Best NZ Bred in Show:

Ch Zaminka Kid Gloves

Right column:

Best Intermediate in Show:

Sunshine In A Glass

Best Limit in Show:

Sunshine Klasic Kruz



The Samoyed Club (Inc) Open Show

Saturday, 23 August 2008

Judge: Mr. B. Lightfoot (New Plymouth NZ)

DOG CLASSES:

1 Baby Puppy - 1 entry (1 absent)

3 Puppy - 1 entry (1 absent)

5 Junior - 1 entry

1st OSCARBI WILD IS THE FUTURE (R Barzey & H Clark)

6 Intermediate - 2 entries

1st SUNSHINE IN A GLASS (Mr K & Mrs A Shugg)

2nd CH WYTEKLOUD FLASH ZAM N KABAM (B & S McRae)

7 Limit - 1 entry

1st SUNSHINE KLASIC KRUIZ (A Shugg & C Horne)

11 Open - 2 entries

1st NZ CH KALASKA ASTRO BOY AT OSCARBI (IMP AUST) (R Barzey & H Clark)

2nd AUST & NZ CH ANAKY ITS PARTY TIME (IMP AUST) (L Barr)

BEST DOG: NZ CH KALASKA ASTRO BOY AT OSCARBI (IMP AUST)

RESERVE DOG: OSCARBI WILD IS THE FUTURE

BITCH CLASSES:

3A Puppy - 2 entries

1st ANGARA SNEAKING ME KISSES (L Barr)

2nd WHAKAPONO OF MAGADAN (M Hayward)

5A Junior - 2 entries (1 absent)

1st SUNSHINE KLASIC LUCY (M Cashmore)

6A Intermediate - 1 entry

1st ANGARA DANCING WITH THE STARS (L Barr)

7A Limit - 1 entry

1st SUNSHINE PAINT ME KIMI-ORA (M Hayward)

8A NZ Bred - 3 entries (1 absent)

1st CH ZAMINKA KID GLOVES (G & L Carleton, S & B McRae)

2nd CH SUNSHINE PAINT ME SUZANNA (C Horne)

10A Veteran - 1 entry

1st CH ANGARA TAIZA TALE (L Barr)

11A Open Bitch - 2 entries (1 absent)

1st NZ CH KALASKA WILD EXCITEMENT AT OSCARBI (IMP AUST) (R Barzey & H Clark)

BEST BITCH: NZ CH KALASKA WILD EXCITEMENT AT OSCARBI (IMPAUST)

RESERVE BITCH: CH ZAMINKA KID GLOVES

Best in Show:	NZ Ch Kalaska Wild Excitement At Oscarbi (Imp Aust)
Reserve Best in Show:	NZ Ch Kalaska Astro Boy At Oscarbi (Imp Aust)
Puppy in Show:	Angara Sneaking Me Kisses
Junior in Show:	Oscarbi Wild Is The Future
Intermediate in Show:	Sunshine In A Glass
Limit in Show:	Sunshine Klastic Kruz
New Zealand Bred in Show:	Ch Zaminka Kid Gloves
Veteran in Show:	Ch Angara Taiza Tale
Open in Show:	NZ Ch Kalaska Wild Excitement At Oscarbi (Imp Aus)

STAKES CLASSES:

DOG HEAD - 2 entries		DOG COAT - 2 entries
Aust & NZ Ch Anaky Its Party Time (Imp Aust)	1 st	Aust & NZ Ch Anaky Its Party Time (Imp Aust)
Sunshine In A Glass	2 nd	Sunshine In A Glass
BITCH HEAD - 4 entries		BITCH COAT - 3 entries
Angara Dancing With The Stars	1 st	Angara Dancing With The Stars
Angara Sneaking Me Kisses	2 nd	Ch Sunshine Paint Me Suzanna
Sunshine Klasic Lucy	3 rd	Whakapono of Magadan
MOVEMENT UNDER 12 MONTHS - 4 entries, (2 absent)		MOVEMENT OVER 12 MONTHS - 3 entries
Angara Sneaking Me Kisses	1 st	Angara Dancing With The Stars
Whakapono of Magadan	2 nd	Ch Angara Taiza Tale
	3 rd	Ch Sunshine Paint Me Suzanna
FEET - 4 entries		TAIL - 4 entries, (2 absent)
Aust & NZ Ch Anaky Its Party Time (Imp Aust)	1 st	Angara Sneaking Me Kisses
Ch Angara Taiza Tale	2 nd	Sunshine Klasic Kruz
Sunshine Klasic Kruz	3 rd	
JUNIOR HANDLER - 2 entries		
Sarah Piper	1 st	
Miracle Hayward	2 nd	



Photos by Simeon Copsey

Left:

**Best Veteran in Show:
Ch Angara Taiza Tale**

Below:

Scenes from the show



The Alaskan Malamute Club Inc, Spitz Breeds Club Inc & The Samoyed Club Present



Snow Dogs Match Day



COME ALONG AND HELP THE SAMOYEDS TAKE ON THE ALASKAN
MALAMUTES AND SIBERIAN HUSKIES

**All dogs welcome including neutered and
spayed dogs**

SUNDAY 23RD NOVEMBER 2008

REPORTING TIME 10.00 AM FOR 10.30 AM JUDGING. WET OR
FINE.

A & P Show Grounds - Levin

When traveling South - turn right into Queens Street at Lights. Turn left at the Dairy into Tiro Tiro Road. The Gateway into the show grounds is across the road from the school in Tiro Tiro Road. When traveling North - turn left into Mako Mako Road. Turn right, at Cemetary into Tiro Tiro Road.

Judge: Samantha Cowie (Taranaki)

**Entry Fee: \$3.00 per dog for the first category
and then \$1.00 per category per dog thereafter**

- Baby Puppy
- Puppy
- Junior
- Intermediate
- NZ Bred
- Open
- Best New Handler
- Best Titled Sled Dog
- Best Non – Titled Sled Dog
- Best Head
- Best Tail
- Best Coat
- Best Mover Under 12 Months
- Best Mover Over 12 Months
- Best Spayed/Neutered
- Best Champion
- Best Veteran

CHAMPION SHOW DOGS PLEASE NOTE:

You can only enter the stake classes

There will be a **Sausage Sizzle** after the show, \$1.00 a sausage, if you wish to bring something else to cook on the BBQ please do.

Contact: Anita Shugg (06) 364 5785 or Lynne Barr (04) 477 1097

www.thesamoyedclubinc.orconhosting.net.nz

Samoyed Collectibles (Part 1)

by Lauren V de C James

Involvement in a hobby often leads to other related activities and the world of canine ownership opens up new vistas for those collectors amongst us. Folk with a passion for collecting anything even remotely resembling a Samoyed will find there is an ever growing selection of items to add to their collection. The internet has opened up so many avenues to encourage us to pursue our passion. Auction sites such as eBay and Trade Me have a constant array of items on which to bid and many sellers have their own web sites offering more goodies.

When I first started collecting Samoyed items it was a case of buying money orders or British Postal Notes. When purchasing the latter the buyer was limited to Two Pounds a day so it could take days to accumulate the amount required unless as I did and persuaded my mother and two sisters to accompany me to the Post Office! Thank goodness those days have gone and we now have credit cards, internet banking and Paypal etc by which to pay for our purchases.

Many clubs, here and overseas, offer Sammy items for sale, e.g. T shirts, key rings, tea spoons, pottery, sweat shirts, ashtrays – in fact you name it, and it's likely there will be a club somewhere or other which has produced that item with a Sam gazing out at you. Clubs often have Samoyed items as prizes for wins so if you have winning Samoyeds your collection has a better chance of growing.

Some clubs have shown an entrepreneurial flair going a step further by commissioning limited edition runs of crystal, china, and the like. I'm always envious of the beautiful array of prizes offered at Samoyed Club of America specialties ... quite quite lovely.

For those who prefer wall decorations there have been some excellent animal artists out there and it is possible to purchase paintings, drawings, or prints of Samoyeds both past and present to hang on your walls. Or perhaps you might consider commissioning a portrait of your favourite Sam or even a family group and have one of a kind to frame and hang. Of course those of you who are dab hands at painting or sketching can create your own art work – but for me, my lack of artistic talent leaves me no alternative but to turn to the experts.

For some the depth of your wallet or credit card limit are deciding factors when choosing what or what not to collect. The other limiting factor is space for storage or display. For those without a deep pocket or space the following smaller items are worth considering:

- (i) Cards
- (ii) Coasters
- (iii) Cigar bands
- (iv) Jigsaw Puzzles
- (v) Mugs

- (vi) Stamps, which can include First Day Covers and Souvenir Sheets; or
- (vii) Teaspoons.

Cards

The word "card" encompasses a wide range of products, produced in varying sizes and shapes, and for many different purposes such as:

1. greeting cards ie birthday, get well, celebration, sympathy;
2. playing cards;
3. postcards;
4. telephone cards;
5. tobacco; or
6. trade cards.

1 Greeting Cards

The Samoyed has featured on a variety of greeting cards. In recent years dogs and cats have proved popular subjects for greeting cards and a recent range printed in Australia features our breed and is priced very reasonably at only \$2.00.

Frederick Thomas Daws (born 1878) painted Eng Ch Loga of the Arctic in 1932, owned by the late Miss Marion Keyte-Perry of the Arctic kennels, and former Chairman of the Ladies Branch of The Kennel Club (UK) (1948-1963). The painting is now in The Kennel Club Collection which a few years ago commissioned a large size Christmas card featuring the painting. Prints of the painting are also available from a web site – look for the title "Samoyed in Artic (sic) Landscape".



Featured below is a delightful unused birthday card printed in the USA c 1990s.



2 Playing cards

Sets of playing cards (54 in a set) have been issued featuring a variety of dog breeds and our breed has been included in a number of those sets. Featured opposite is one showing a portrait of Am Ch Sweet Missy of Sammar, the first Samoyed to win Best in Show All Breeds in the USA, which she won from the Puppy Class in 1949. Overleaf is the 10 of Diamonds.

2 Postcards

Deltiology is the name for the collection and study of postcards and canines have proved a popular subject for many years. The Samoyed has been fortunate to have featured on postcards, to my knowledge, since the early 20th century and no doubt this publicity was of great assistance to the early breeders working to establish and popularize the breed.

Our breed has twice featured on Dog Food Company "Spratts Patent" postcards both of which were illustrated by two of the top artists of the period. One is of "White Fang" painted and signed by the aforementioned F T Daws and is from the series of 36 cards (issued as 3 sets of 12) entitled *Portrait Post Cards of Champion Dogs* published just before World War 1 (refer cover).

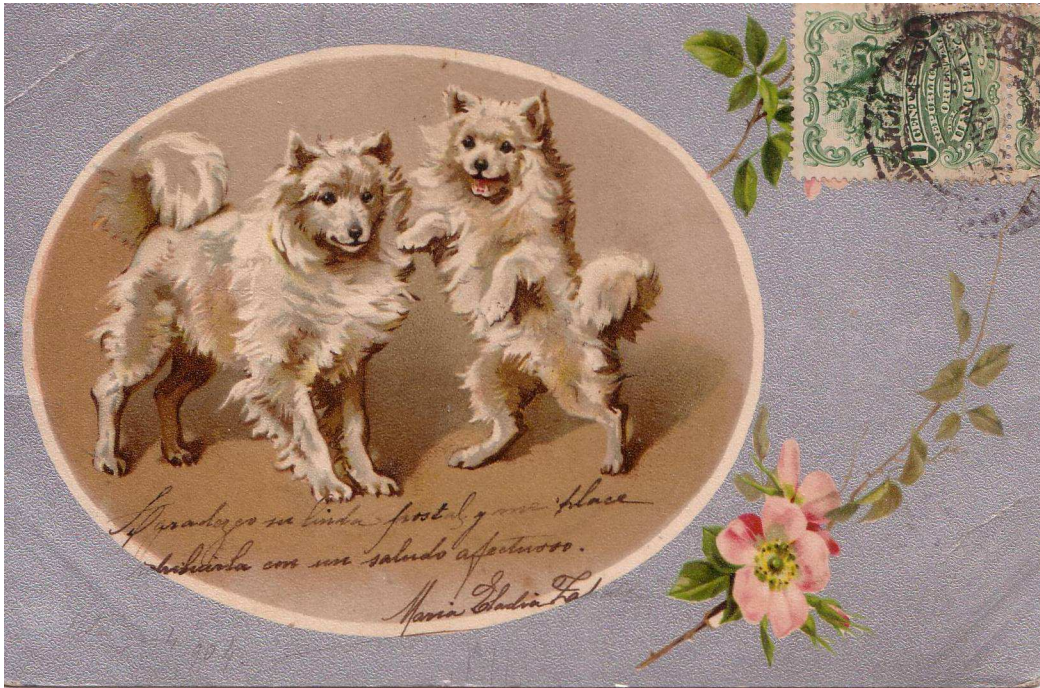
My collection includes the postcard (unused), and shows the beautifully carved sled in the background, which does not appear in all versions. On the reverse is printed the following information: "*The Samoyede – pronounced "Samoyad – as a sledge dog is every bit as good a worker as the Eskimo and he possesses the great virtue of being a first-rate companion, being extremely intelligent and of an affectionate disposition. His late Majesty King Edward VII accomplished much in the way of popularizing this breed"*.

Interestingly the dog is named by the artist on the postcard as "White Fang" with no Champion title showing yet others featured in the series were English Champions in line with the series title. Searching for more information on "White Fang" I did locate a bitch named White Fang (unreg) in The Samoyed Association pedigree book volume 1 (pedigree No. 30). Can this be the Samoyed featured in the postcard? Her daughter Loufa mated to Eng Ch Siberian Keeno (born 1915) produced Louva of Farningham so the timeframe fits. White Fang can be found in the pedigree of such luminaries as Aust Ch Ice Mist Beauty of Kobe (Imp UK), Eng & Aust Ch Imperial Rebel of Kobe (Imp UK), and Eng Ch Whitewisp Lunar Module, to name just a few.

The other Spratts card was illustrated by Ruben Ward Binks (not shown here) and that series of cards was issued in the late 1920s.

On the next page is a postcard showing a brace of Samoyeds which was posted in Uruguay 9 April 1904. The second card featured is a sepia toned photo of four Samoyeds sent as a birthday greeting in England on 3 March 1928. The third post card featured is unused and was most likely produced in the early part of the 20th century.







Another early unused postcard in my collection is of a young male Samoyede “Antarctic Nico – height at shoulder 23 inches”, British Museum (Natural History) printed by Waterloo & Sons Ltd.

Though the post card was printed in England it was posted in New Zealand on 6 June 1907.

Antarctic Nico sired by Russki of Orton ex Rhina, was bred by Miss D Wharton Duff and owned by breed founder Mrs Kilburn Scott. He can be found in pedigree No. 63 (Samoyed Association pedigree book volume 1) of Eng Ch Winter Queen of Kobe born 1943 whose descendants include many English exports to Australia and New Zealand such as Aust Ch Ice Mist Beauty of Kobe (Imp UK), Eng & Aust Ch Imperial Rebel of Kobe (Imp UK), Eng & Aust Ch Darryl of Tamitsa (Imp UK), Aust & NZ Ch Tatina of Kobe (Imp UK) [Kalina]; Carwood Snow Nanette (Imp UK) [Nikolaevsk], and Kobe Donna of Snowways (Imp UK) [Kalina, Belaya Sobaka].

His date of birth was 15 April but I have not been able to establish the year in which he was born. His 2nd in open dog at Southend-on-Sea championship show in 1916 qualified him for entry in The Kennel Club (UK) 1917 Stud Book. Nico continued to be exhibited until at least 1921 when he won 2nd in open dog at Crufts and that year he sired a litter to Liake which was whelped on 19 June.

The breed has also appeared on Film Star post cards including Lilian Harvey, Ivy Duke, and Olga Tschechova but the card featured here is of a Samoyed being held by the famed British stage actress Dame Ellen Terry, born in 1848.

The product of two actors she was given her first professional role at the age of eight and performed throughout her life until her death in 1928. The family theatrical legacy was passed on to her nephew, the renowned actor, Sir John Gielgud, and her son, the stage designer and producer Edward Gordon Craig.



To be continued in Summer 2008 issue.



Unused postcard featuring watercolour by Jocelyn Brassac.
This is one of at least two postcards produced by Club Français Des Chiens Nordiques in 1997.



Painting by Frederick Thomas Daws (born 1878)
Title: Samoyeds with Eskimo
Available as a print from: http://store.encore-editions.com/Artists/Frederick_Daws.html

NZ Ch Sikandi Silva Joker (Imp Aust)

13/2/78 to 24/6/87



Pictured winning Best Non Sporting at the 1982 National Show

Owned by Mr N Wilson and the late Mrs F Wilson

Breeder: Sylvia Korsten
Sire: Eng Ch Novaskaya Silva Solo
Dam: Novaskaya Tina Lafay (Imp UK)

At a meeting in early April 1978, I was looking through an Australian dog magazine when I came to an advert for a litter from an English import bitch who had been mated in England.

I liked this photo of Novaskaya Tina Lafay, and "borrowed" the advert. I arrived home from the meeting and insisted Fran ring the breeder, Sylvia Korsten, in Victoria to see what if any pups were available.

Fortunately there was one male which we agreed to buy and "Solo" eventually made the trip across to New Zealand. We were quite ecstatic when he arrived although that was not without some drama. He had to be at Melbourne Airport at 6 am Australian time but owing to mechanical delays this poor pup

arrived here at 2 am next day. Needless to say I wasted no time to get to the airport.

When I saw the first of any Novaskaya stock to arrive in this country I was rapt. After a quick drink we headed home with this treasure. Once home it didn't take Fran long to wake up with a pup clambering all over her. She was as happy as I was with our boy. As he grew, biscuit became more noticeable in his coat and he always carried a very heavy coat. His temperament was exceptional - nothing mattered apart from food and drink.

In 1980 the late Annette Day gained his first National challenge under a Japanese judge, Mr K Igarashi, while Fran showed him to his second in 1982 under a Canadian (Mrs H Logan) who went on to award him Best of Group. She was very keen to buy him but we couldn't part with him.

Unfortunately a few months later, Solo did both cruciate ligaments and ended his stud career. After a lot of patience we got him up and walking but he was just a great pet then.

Over the years we were privileged to have him, Solo gave us an immeasurable amount of pleasure, some very nice pups, and a lot of fun. He would empty any cup, glass or anything with liquid in it - tea, coffee, wine, beer or spirits, if you didn't watch it.

At one stage while showing him, he got somewhat overweight, so he went up to Watermere kennels, Hamilton, where Phil Trafford trained him to work the sheep and cattle, and lose weight.

I thank both Sylvia Korsten and Betty Moody for a wonderful pet.

Noel Wilson
Pearlonna Samoyeds

The Samoyed considers himself a house dog and at times, despite his 20-30 kgs, he may think he is a lap dog.

Our greatest glory is not in never falling, but in rising every time we fall. - Confucius

*Today, there are three kinds of people: the have's, the have- not's, and the have-not-paid-for-what-they-have's.
- Earl Wilson*

Samoyed Successes at the National Show 1955-2007 (Part 2)

by Lauren de C James

Best of Breed and Opposite Sex Challenge Certificate Winners 1955 – 2007 table – Winter 2008

Due to a production problem the last column in the table was omitted as would be apparent when looking at the large white gap at the bottom of each page. Here are the missing columns:

Year	Challenge Certificate opposite sex	Year	Challenge Certificate opposite sex
1955	Ch Sutwick of Te Whiti (Mr & Mrs P C Baillie)	1982	Novaskaya Silva Sabya (Imp UK) (Mr & Mrs T A R Maitland) #
1956	Princess Katinka of Warnick (Mr H Nicholson)	1983	Ch Eischvenka Pearlonna (Mrs D Cohen) RBOB
1957	Ch Snowland Tina (Mr D M Renner)	1984	Liskalite Arctic Fame (Mr R D & Mrs L A Perry) #
1958	Kalina Stardust (Aust) # * (Mr & Mrs P C Baillie)	1985	Ch Lubianca Myatizh Cher (Mr A Aitken)
1959	Natasha of Karina (Mr J Moore)	1986	NZ Ch Novaskaya Silva Sabya (Imp UK) (Mrs E B Maitland/Mrs G Grey) RBOB
1960	Ch Sweet Lisa of Karina (Mr D M Renner)	1987	Vashka Novarimski (Mr A P Blewitt) RBOB
1961	Ch Zoja of Whitefirs (Mr & Mrs H Alford)	1988	Ch Samivahn Ureka's Klopya (Mr P Dunning) RBOB
1962	Damka of Rydal Mount (Mrs M Renneberg) #	1989	Kimchatka The Ballerina (Mr & Mrs M Adams) RBOB #
1963	Trezor of Belaya Sobaka (Mr & Mrs L A S Auckram) RBOB #	1990	Sunshine Dazzling Snow (Mrs I Allison) RBOB #
1964	Ch White Crystal of Kinnoul (Mrs A Clarke)	1991	Ch Kimchatka The Ballerina (Mr & Mrs M Adams) RBOB
1965	Aust Ch Tatina of Kobe (Imp UK) (Mr & Mrs N K Fraser) RBOB #	1992	Liskalite Magic Future (Mrs A J Day & Mr J Gilchrist) RBOB #
1966	Voinaika Trishka (Mr W P & Mr & Mrs A C Edwards) RBOB #	1993	Ch Samivahn Adenoki Tochka (Miss L Barr)
1967	Birchleigh Rani (Mrs L King) # RBOB	1994	Liskalite Rock Of Honour (Mrs A J Day & Mr J Gilchrist) #
1968	Ch Snowflake of Athlor (Mrs A Clarke)	1995	Samivahn Roosay (Miss L Barr) RBOB
1969	Ch Snowflake of Athlor (Mrs A Clarke)	1996	Ch Sunshine On My Shoulder (Mrs L Fothergill) RBOB
1970	Voinaika Barownowski (Mrs M Renneberg) #	1997	Kazalinski Wy Zen (Miss P J Taylor) #
1971	Angelita Tosca of Lynall (Mrs J Hendry) #	1998	Aldonza Kid N Lace (Imp Aust) (Mr G & Mrs L Carleton) RBOB #
1972	Escameno Ebby of Lynall (Mr S Hofer) RBOB #	1999	Ch Zaminka Olympic Medal (Mr G & Mrs L Carleton)
1973	Ch Angelita Tosca of Lynall (Mrs J Hendry)	2000	Ch Zaminka Olympic Medal (Mr G & Mrs L Carleton) RBOB
1974	Ch Pandora of Rydal Mount (Mrs F M Wilson) RBOB	2001	NZ Ch Aldonza Kid N Lace (Imp Aust) (Mr G & Mrs L Carleton) RBOB
1975	Kimaritsa of Pearlonna (Mr N J & Mrs F M Wilson) #	2002	Ch Zaminka Olympic Medal (Mr G & Mrs L Carleton)
1976	Ch Gay Lady of Vanda (Mrs M D Farr & E Faber) RBOB	2003	Kimchatka Phoebe-rose (Mrs J Hawkins & Mrs G Grey) # RBOB
1977	Ch Nikolaevsk Kezhma (Miss L R Vine, later Mrs Harris)	2004	Ch Kimchatka Sweet As (Mrs L Fothergill)
1978	Rayski of Nenetsky (Mrs E Taylor) #	2005	Ch Zaminka Still A Kid At Heart (Mr R G Barzey) RBOB
1979	Ch Ecstacey of Samways (Messrs G Paul & P Paki)	2006	NZ Ch Kalaska Wild Excitement At Oscarbi (Imp Aust) (Ms H Clark & Mr R Barzey)
1980	Kandimanda of Watermere (Mrs B Nepe) RBOB	2007	NZ & Aust Ch Novastar Lady In Whyte (Imp Aust) (Mrs J Hawkins/Hamer) RBOB
1981	Novaskaya Georgia Mist (Imp UK) (Mr & Mrs A P Blewitt) #		

Sidelights on the National

(By "Looker-on")

It was in miniature, organized and produced, something like what we read about the great Crufts in London and the committee responsible is entitled to a "pat on the back" for a job well done.....

Naughty? Looking on, one noticed a few exhibitors, innocently perhaps, wearing their winning rosettes while showing their dogs.

Very naughty? One even saw a steward who had evidently forgot to remove the red decoration on his lapel while showing a dog in the ring. In the Dominion it is considered unethical to do this. In England it is a breach of the Kennel Club rules for an exhibitor to wear any decorations or prize-cards while in the judging ring.....

Reprinted from "New Zealand Dog World", November, 1955



*Jubilant handler and joint owner Glenys Grey and NZ Ch Kimchatka Laced With Ice (Imp Aust) pictured after winning **Best in Show** and **Best Junior in Show** at the 1998 National Show*

Photo courtesy Dominion Post Collection, Alexander Turnbull Library, Wellington, New Zealand. Ref. Dom/1998/0906/1/05

Sponsors

Though sponsors provided products to the 'In Show' winners over a number of years it was not until the 1962 National Show that naming rights came into play with the show promoted as the *Fido National Show*. Felix Foods Ltd., the manufacturers of Fido dog food, remained as sponsor for 17 years through to 1978. Over the years all exhibits have received sponsor products usually by owners presenting a tear off voucher from their exhibit number to the sponsor's stand. In 1979 Tux took over as sponsor continuing in that role until 1994 when a new sponsorship arrangement was made with Pedigree PAL®. In 2004 PRO PLAN® took on the sponsorship and is the current sponsor.

Group Classification

Breed groupings have undergone many changes since the inception of the National Show. In 1955 the Samoyed was classified as a member of the Non Sporting Group. This group was divided into two divisions, the first division comprising Chow Chow, Dalmatian, German Shepherd, Great Dane, Keeshond, Old English Sheepdog, Rough Coated Collie, St Bernard, and Samoyed, whilst the second division comprised Boxer, Bulldog, Welsh Corgi, (Cardigan and Pembroke), Poodle, Shetland Sheepdog, and any other variety. The other groups were Toys, Terriers, and Sporting (Division 1: Gundogs, Division 2: Hounds).

In 1959 and 1960 both Divisions 1 and 2 combined to compete for Non Sporting Group awards. However, in 1961 and 1962 Non Sporting (formerly known as Division 1) became Group 5 Non Sporting, and the former Division 2 became Group 6 Non Sporting. I imagine the duplication of group name could have caused some confusion for new exhibitors coming to grips with the group names.

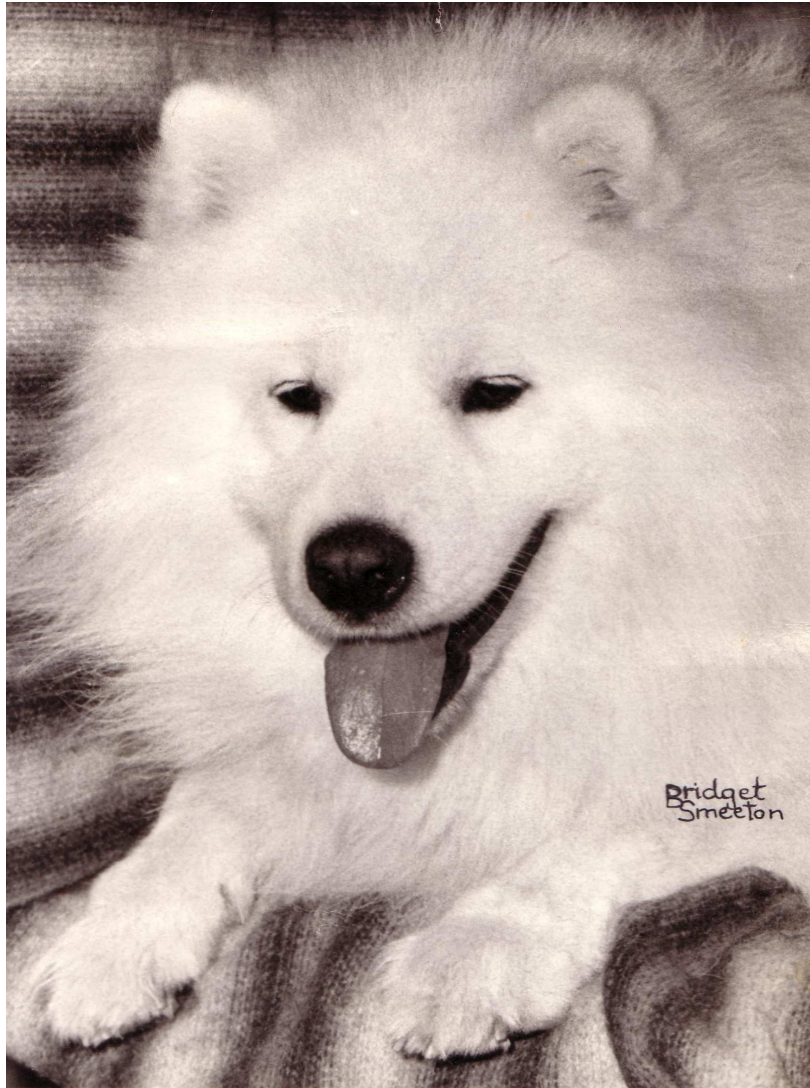
A re-classification of breeds was in effect for the 1963 National Show which now placed the Samoyed in Group 6 Non Sporting (other than Sheep and Cattle Dogs) along with the following breeds: Boston Terrier, Boxer, British Bulldog, Bullmastiff, Chow Chow, Dalmatian, Dobermann, French Bulldog, Great Dane, Keeshond, Mastiff, Newfoundland, Poodles (3 varieties), Pyrenean Mountain Dog, St Bernard, Samoyed, Schipperke, Schnauzer, Schnauzer (Miniature), Shih Tzu, Tibetan Spaniel, and Tibetan Terrier.

Sheep and Cattle breeds such as the German Shepherd, Welsh Corgi (Cardigan and Pembroke), Collies, and others formed Group 5 Sheep and Cattle Dogs which by 1973 had been renamed the Working Group.

By 1990 the ever-expanding Non Sporting Group reflected the introduction of many new breeds to New Zealand and was the impetus for a major re-classification of breeds. The review resulted in the creation of seven groups, the new group being known as *Utility* (Group 6) which included the Samoyed and other breeds from the former Non Sporting Group. The revamped *Non Sporting Group* became Group 7. The implementation of the changes came into effect 1 January 1992 and were to remain unchanged until 31/1/97 unless further breed submissions required group re-allocation. There have been no further changes.

Following the split the new Utility group attracted an entry of 17 breeds at the 1992 National Show whilst the Non Sporting group fielded the same number.

Since the advent of the first National Show, new breeds to the Non Sporting or Utility groups include the Siberian Husky (initially in the Working Group), Alaskan Malamute, Black Russian Terrier, Dogue De Bordeaux, German Pinscher, Italian Corso, Japanese Akita, Japanese Spitz, Leonberger, Neapolitan Mastiff, Newfoundland, Portuguese Water Dog, Rottweiler, Shar Pei, and Shiba Inu, but that's not all of them! It does seem as though the Utility Group has become the dumping ground for many new breeds.



Ch Tarna of Rydal Mount
Best Non Sporting 1962
Also Reserve Best Non Sporting Puppy 1960

Bred, owned, and handled by Mrs K O'Connor
 Sire: Aust & NZ Ch Kalina Kuts (Imp Aust)
 Dam: Ch Penelope of Rydal Mount

The following table illustrates the changes in group dynamics over the 53 years of the National Show. It lists the number of breeds per group entered for the National show but it should be noted that not all breeds registered with NZKC by the relevant years were represented at each show (group number in brackets).

Group	1955	1960	1963	1975	1980	1985	1990	1992	2000	2005	2007
Toys (1)	8	10	9	15	17	19	20	20	17	18	20
Terriers (2)	7	7	7	12	18	17	16	19	21	20	20
Sporting – Gundog (3)	8	8	11	16	19	17	18	20	20	20	18
Sporting – Hounds (4)	9	8	8	17	20	18	21	22	20	20	19
Non Sporting (Div. 1)	7	8	NA	NA	NA	NA	NA	NA	NA	NA	NA
Non Sporting (Divi. 2)	6	8	NA	NA	NA	NA	NA	NA	NA	NA	NA
Sheep & Cattle Dogs/ Working (5)	NA	NA	7	11	14	17	17	16	18	16	17
Non Sporting (6)	NA	NA	12	19	24	25	29	NA	NA	NA	NA
Utility (6)	NA	NA	NA	NA	NA	NA	NA	17	20	22	19
Non Sporting (7)	NA	NA	NA	NA	NA	NA	NA	17	18	18	18



Left to right ~ Best Non Sporting winner 1967 and owner, (also Best in Show winner), group judge Mr W E Foster (UK) and Reserve Best Non Sporting 1967 NZ Ch Kalina Smirnoff (Imp Aust), owned by Mr & Mrs N K Fraser, handled by Mrs Neilmar Fraser

Prize Money – Group Awards

At the first National show in 1955 the Best in Group received Three Guineas and a sash, whilst Reserve Best in Group received One Guinea. There is no reference to any prize money for the winners of Best Puppy in Group, Reserve to Best Puppy in Group, Best Junior in Group or Reserve to Best Junior in Group.

In 1961 the Best Dog in Group, Best Bitch in Group, Best Junior in Group, and Best Puppy in Group each received One Guinea whilst the Reserve Best Dog in Group, Reserve Best Bitch in Group, Reserve Best Junior in Group and Reserve Best Puppy in Group each received one Half Guinea, ie Ten Shillings and six pence.

Fast forward to 1979 when the prize money for Best in Group was \$20, and the winner also received a trophy and sash. The Reserve to Best in Group received \$10 plus a trophy whilst the Best Intermediate in Group, Best Junior in Group, and Best Puppy in Group each received \$10, a sash, and trophy. In addition all group specials received products from the sponsor Tux.

There has been no reference to cash prizes since the mid 1980s for group or In Show winners.

In 1994 Best of Group winners won special edition Pedigree PAL® track suits.

Order of judging Group Specials

This aspect of conformation shows has also experienced some changes over the years. These have not been easy to track simply because at times the order has been altered only at the National Show through New Zealand Kennel Club Executive being able to grant dispensation from a Show Regulation. From a review of the National Show catalogues the following group awards were made in 1955 and again in 1956:

Non Sporting Group Division 1:

- Best in Group,
- Reserve to Best in Group,
- Best Puppy in Group,
- Reserve to Best Puppy in Group,
- Best Junior in Group, and
- Reserve to Best Junior in Group.

These same awards applied in 1957 but with the addition of the following to each Division:

- Best Dog in Non Sporting,
- Reserve to Best Dog in Non Sporting,
- Best Bitch in Non Sporting, and
- Reserve to Best Bitch in Group.



Voinaika Baronowski (later Champion)
Best Non Sporting Puppy 1968
 Owned by Mr & Mrs P Robson
 (handled by Mrs Neilmar Fraser)

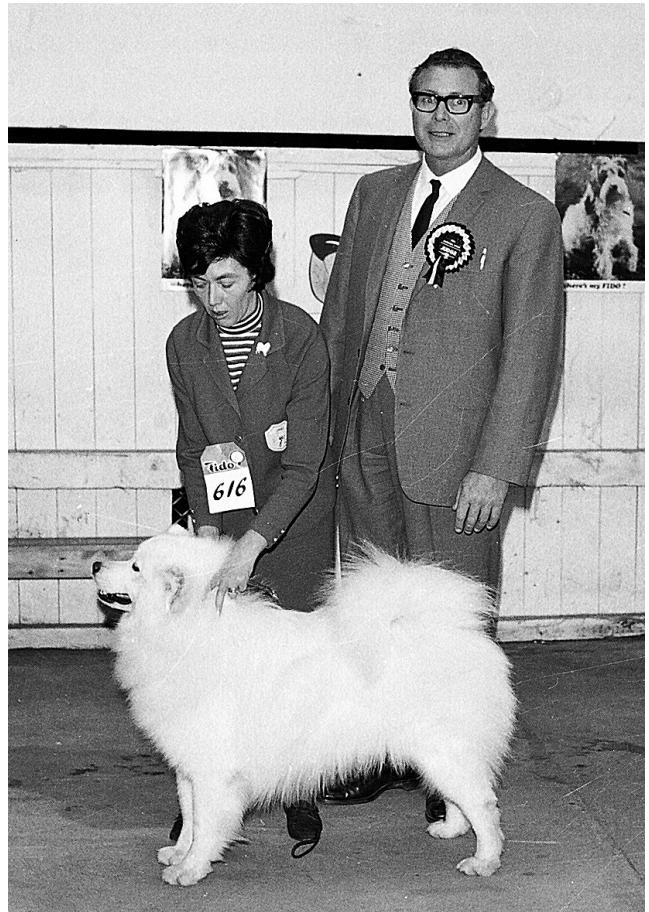
Sire: NZ Ch Kalina Smirnoff (Imp Aust)
 Dam: NZ Ch Kalina Zeigred (Imp Aust)
 Breeder: Mr & Mrs N K Fraser

The report of the Executive Council April 1964 meeting published in the May 1964 issue of the New Zealand Kennel Gazette detailed new regulations made for the order of judging at championship shows. The order was Best of Group, Reserve Best of Group, Best Puppy of Group and Best or Reserve Best in any other class in the Group. There would be no award of Best of Opposite Sex at any Championship Show.

The editorial that month provides a reason for the new regulation. *“Those of us who have suffered from muddled stewardship and accidental reversals over the years will understand the compelling reasons for the new Regulation. It will be noticed also that the very unsatisfactory award of “Best of Opposite Sex” has been abolished. This award if properly handled*

was a Steward's nightmare; all too often of course it was not properly handled and more often than not the dog which got the award had not met numerous exhibits of its sex, any one of which might have been a winner. No regrets need be reserved for the passing of this monstrosity”.

By the mid 1960s the order had changed again to Best Puppy in Group, Best Junior in Group, Best in Group, and Reserve to Best in Group.



Voinaika Romanov (later Champion)
Best Non Sporting Junior 1970
 Owned and bred by Mr & Mrs N K Fraser
 (handled by Mrs Neilmar Fraser)

Sire: Eng & Aust Ch Imperial Rebel of Kobe (Imp UK)
 Dam: Ch Voinaika Tamara

Though the intermediate class was introduced for all breeds in 1972 it was not until 1974 that the Best Intermediate of each Breed competed for Best Intermediate in Group and Best Intermediate in Show.

By 1984 the judging order was as follows: Best of Group and Reserve Best of Group, followed by Best of Group for all scheduled classes in ascending numerical order.



NZ Ch Kalina Silver Knight (Imp Aust)
Winning Best Non Sporting 1973
Also won Reserve Best Non Sporting 1972 and 1974 and
Best Non Sporting Junior 1972

Owners: Mr & Mrs N K Fraser (handled by Mrs Neilmar Fraser)
 Breeder: Mr & Mrs J Sydenham-Clarke
 Sire: Aust Ch Kalina Silver Tasman
 Dam: Kalina Imperial Zarena



Ch Snowranger Smyelchak
Winner of Best Non Sporting Puppy at 1976 National, also Best of Breed 1977 and 1979

Bred and owned by Mr & Mrs A Zentveld
 Sire: NZ Ch Kalina Silver Knight (Imp Aust)
 Dam: Malo Zneska of Orah



Kalina Major Module (Imp Aust) (later Australian and New Zealand Champion)
Best Non Sporting Intermediate 1978

Owner: Mr & Mrs J Sydenham-Clarke and Mrs N Fraser
(handled in New Zealand by Mrs Neilmar Fraser)
Breeder: Mr & Mrs J Sydenham-Clarke
Sire: Fairvilla Tsarovitch (Imp UK)
Dam: Kalina Silver Zala



Ch Vashka Storm Cloud
Reserve Best Non Sporting and Best Non Sporting Intermediate 1986

Owner: Mr A P Blewitt
Breeder: Mr & Mrs M W Day
Sire: Ch Kimchatka Alexei
Dam: Aust & NZ Ch Petroveena Pearlonna



Ch Liskalite Magic Future
Best of Breed in 1993 and 1997

Owner: Miss S A Gilchrist (1997) (pictured)
 Breeder: Mr A J Day & Mr J Gilchrist
 Sire: Ch Liskalite Mystiq Magic
 Dam: Ch Liskalite Arctic Angel



Ch Skrownek Sev Kazan
*Best Utility and Best Utility Open 2007,
 also Best Puppy in Show 2002, Best of Breed 2005, 2007, and 2008*

Owner: Ms S Stewart & Ms J Wells
 Breeder: Ms S Stewart
 Sire: NZ Ch Sever Imperial Shah (Imp Aust)
 Dam: Ch Kursharn Shah Mashenka



Ch Lealsam Hugo Boss
Best Utility Junior 2008

Bred and owned by Mr A & Mrs D Reeve (handled by Mr Andrew Reeve)
 Sire: NZ Ch Roybridge Diamond Crusader At Nikolaevsk (Imp UK)
 Dam: NZ Ch Kalaska Grand Elegance At Lealsam (Imp Aust)

In 1990 Best Open in Group was introduced and was judged after Best Intermediate in Group.

Best New Zealand Bred in Group was introduced in 1999 and judged before Best Open in Group.

In 2002 Best Baby Puppy of Group was introduced and was judged before Best Puppy of Group.

Judging order is now as follows: Best in Group, Reserve Best in Group, Best Baby Puppy in Group, Best Puppy in Group, Best Junior in Group, Best Intermediate in Group, Best NZ Bred in Group and Best Open in Group.

Challenge System

Administration of the challenge point system has undergone various changes but lack of space precludes that being detailed here.

News about future National Shows

As this magazine goes to print the November "NZ Dog World" (Gazette renamed) arrived in the mail. Inside the front cover is the news that the National Show in 2009 and 2010 will be held at a new venue, Manfeild Stadium at Feilding in the Manawatu. A new sponsor has already committed to an amount equivalent to the venue rental which must be a considerable relief after reading about the deficit incurred by this year's show.

Because the Rugby World Cup will take place in New Zealand in September and October 2011 the National Show that year will be held from 29 April to 1 May. The venue, to be confirmed, will be in the greater Wellington region.

The times they are a'changing!

The following is a listing of all group awards won by our breed from 1955 to 2008 inclusive. Our breed seldom fared well in group competition during the 1990s but it did achieve the ultimate award of Best in Show, in 1998.

Key (applicable to all tables)

indicates later New Zealand Champion

* indicates later Australian Champion

+ indicates later New Zealand Grand Champion

Group Awards ~ 1955 to 1966 [Part 1]

Group names: Non Sporting Division 1: 1955-1960; Non Sporting Group 5: 1961-1962; Non Sporting Group 6: 1963-1991; Utility Group 6: 1992 onwards

Year	Best in Group	Reserve Best in Group	Puppy in Group	Reserve Best Puppy in Group
1955		Ch Rimski of St Mahlib (Mrs J Knowles) <i>Divison 1</i>		
1956	Ch Vovoya Snow King (Mrs L Buckley) <i>Division 1</i>			
1957: No Samoyed placed				
1958		Ch Czar of Belaya Sobaka (Mrs V E P Auckram) <i>Division 1. Also 3rd Divisions 1 and 2</i>		
1959: No Samoyed placed				
1960				Tarna of Rydal Mount # (owner Mrs A Maguire) <i>Divisions 1 and 2</i>
1961		Ch Khysser Karl of Kersbrook (Mr & Mrs D M Renner) <i>Group 5</i>		
1961		Reserve Best Bitch <i>Group 5</i> : Sweet Krisia of Karina (Mr & Mrs D M Renner)		
1962	Ch Tarna of Rydal Mount (Mrs K O'Connor) <i>Group 5</i>			
1963: No Samoyed placed				
1964			Kalina Smirnoff (Imp Aust) # (Mr & Mrs N K Fraser)	
1965-1966: No Samoyed placed				

Note: As no Samoyed was awarded Best Junior during the above period no column is included for this award.

Group Awards ~ 1967 – 1972 [Part 2]

Year	Best in Group	Reserve Best in Group	Best Junior in Group	Best Puppy in Group
1967		Ch Kalina Smirnoff (Imp Aust) (Mr & Mrs N K Fraser)	Voinaika Dominic # (Mrs M Renneberg)	
1968				Voinaika Baronowski # (Mr & Mrs P Robson)
1969			Voinaika Romanov # (Mr & Mrs N K Fraser)	
1970 – 1971: No Samoyed placed				
1972		Kalina Silver Knight (Imp Aust) # (Mr & Mrs N K Fraser)	Kalina Silver Knight (Imp Aust) # (Mr & Mrs N K Fraser)	

Note: Though the intermediate class was introduced for breed judging in 1972 it was not until 1974 that the Best Intermediate of each Breed competed for Best Intermediate in Group and Best Intermediate in Show.

Group Awards ~ 1973 – 1997 [Part 3]

Year	Best in Group	Reserve Best in Group	Best Intermediate in Group	Best Puppy in Group
1973	Kalina Silver Knight (Imp Aust) # (Mr & Mrs N K Fraser)			
1974		Ch Kalina Silver Knight (Imp Aust) (Mr & Mrs N K Fraser)		
1975				Yevgeny of Kazache (Mrs G Hunt)
1976				Snowranger Smyelchak # (Mr & Mrs A Zentveld)
1977: No Samoyed placed				
1978			Kalina Major Module (Imp Aust) # * (Mr & Mrs J Sydenham-Clarke & Mrs N Fraser)	
1979 – 1980 No Samoyed placed				
1981	Kimchatka Achilles # (Mr & Mrs T A R Maitland)			Kimchatka Achilles # (Mr & Mrs T A R Maitland)
1982	Ch Sikandi Silva Joker (Imp Aust)			
1983 – 1985: No Samoyed placed				
1986		Ch Vashka Storm Cloud (Mr A P Blewitt)	Ch Vashka Storm Cloud (Mr A P Blewitt)	Suedanka High Appeal (Mrs S J Thomas)
1987: No Samoyed placed				
1988				Liskalite Mystiq Magic # (Mr B S & Mrs M A Cathcart)
1989				Samways Pure Style # (Mrs K L Jensen)
1990 – 1991 No Samoyed placed				
1992			Ch Samivahn Pralaza (J E & L G Watts)	
1993: No Samoyed placed				
1994				Liskalite Arctic Opal # (Mrs A J Day & Mr J Gilchrist)
1995 – 1997: No Samoyed placed				

Note: As no Samoyed was awarded Best Junior or Best Open during the above period no columns are included for these awards.

Group Awards ~ 1998 – 2000 [Part 4]

Year	Best in Group	Best Junior in Group	Best Puppy in Group
1998	NZ Ch Kimchatka Laced With Ice (Imp Aust) (Mrs J Hawkins & Mrs G Grey)	NZ Ch Kimchatka Laced With Ice (Imp Aust) (Mrs J Hawkins & Mrs G Grey)	
1999	No Samoyed placed		
2000			Tobolsk Lord Of The Mist # (Mrs S McKandry)

Note: As no Samoyed was awarded Best Open, Reserve Best, Best Intermediate, or Best NZ Bred (introduced in 1999) during the above period no columns are included for these awards.

Group Awards ~ 2001 – 2004 [Part 5]

Year	Best in Group	Best NZ Bred in Group	Best Junior in Group	Best Puppy in Group	Baby Puppy in Group
2001		Ch Kimchatka Sweet As Ice (Mrs J Hawkins, Mrs G Grey & Mr S Hamer)			Not scheduled
2002				Skrownek Sev Kazan (Ms S Stewart) #	First occasion scheduled
2003					Silvertips A Touch of Magic # + (Mr G P & Mrs L J Carleton)
2004		Silvertips Cosmic Storm # (Mr E K Pickett)			Silvertips Destind To Dazzle (Mrs J McCormick)

Note: As no Samoyed was awarded Reserve Best, Best Open, or Best Intermediate during the above period no columns are included for these awards.

Group Awards ~ 2005 – 2008 [Part 6]

Year	Best in Group	Best Open in Group	Best Intermediate in Group	Best Junior in Group
2005	No Samoyed placed			
2006				Ch Kalaska Wild Excitement At Oscarbi (Imp Aust) (Ms H Clark/Mr R Barzey)
2007	Ch Skrownek Sev Kazan (Ms S Stewart/Ms J Wells)	Ch Skrownek Sev Kazan (Ms S Stewart/Ms J Wells)	Aust Ch Anaky Topsy On Schnaps (Imp Aust) (Mrs A Andrew)	
2008				Ch Lealsam Hugo Boss (Mr A & Mrs D Reeve)

Note: As no Samoyed was awarded Reserve Best, Best NZ Bred, Best Puppy, or Best Baby Puppy during the above period no columns are included for these awards.

Group Stakes

Group stakes were scheduled from 1955 to 1968 after which they ceased. Invariably group stakes mirrored the breed classes scheduled that year. In 1972 an All Breed Baby Puppy Sweepstake was introduced and further All Breed Sweepstakes followed (read about those in part three of the series in the Summer issue). Results of Group stakes were seldom published in the Kennel Gazette and scratchings too were seldom noted in the catalogues at NZKC library. A few notable results are included here but lack of space precludes a full listing. During the years that some of the Sheep and Cattle breeds were included in the Non Sporting group it is notable how the German Shepherds in particular dominated the Stakes classes. The Samoyed entry is shown in brackets.

Year	Class	Entry	Placings
1955	Open	26 (10)	1 st Ch Rimski of St Mahlib
1956	Open	31 (13)	1 st Ch Vovoya Snow King
1957	Puppy	19 (4)	3 rd Silva Mist of Chienne D'Or (Mr & Mrs P Baillie) #
1957	Open	49 (15)	3 rd Ch Czar of Belaya Sobaka (Mrs V E P Auckram)
1960	Puppy	23 (5)	2 nd Tarna of Rydal Mount (Mrs A Maguire) #
1962	Open	15 (2)	1 st Ch Tarna of Rydal Mount (Mrs K O'Connor)
1965	Puppy	32 (7)	2 nd Voinaika Tymba (Mr & Mrs N K Fraser)
1966	Open	35 (6)	2 nd NZ Ch Kalina Smirnoff (Imp Aust) (Mr & Mrs N K Fraser)
1968	Puppy	35 (2)	1 st Voinaika Baronowski (Mr & Mrs P Robson)

In Show Awards



NZ Ch Kalina Smirnoff (Imp Aust)
Winning Reserve Best in Show 1967
Also won Best Non Sporting Puppy 1964

Owner: Mr & Mrs N K Fraser (handled by Mrs Neilmar Fraser)
 Breeder: Mr & Mrs J Sydenham-Clarke
 Sire: Eng & Aust Ch Darryl of Tamitsa (Imp UK)
 Dam: Aust Ch Kalina Serena

Prizes, Prize Money and Trophies

Perpetual cups for Best in Show and Best Puppy in Show were presented at the first National Show and the following year a perpetual cup for Best Junior in Show was introduced.

The winner of Best in Show at the first National Show received Ten Guineas, a sash and perpetual cup, whilst the Reserve Best in Show received Five Guineas, plus a sash and the third Best in Show received Two Guineas. Both the Best Puppy in Show and Best Junior in Show received Five Guineas and a sash plus the Puppy in Show winner received the aforementioned perpetual cup. In addition the winners of Reserve to Best Puppy in Show and Reserve to Best Junior in Show each received One Guinea.

Nowadays the type of trophy presented is never mentioned in schedules but in 1962 the Best in Show winner received a silver tea service whilst the Best Puppy in Show winner received a silver tray, both being donated by the sponsor Felix Foods Ltd.

In 1961 Best in Show received Ten Guineas, the Runner up in Show Five Guineas, Best Dog in Show and Best Bitch in Show Two Guineas, Reserve Best Bitch in Show and Reserve Best Dog in Show One Guinea, Best Junior in Show Five Guineas, Best Puppy in Show Eight Guineas, Reserve Best Junior in Show Two Guineas and Reserve Best Puppy in Show Three Guineas. Why the Best Puppy and Reserve Best Puppy warranted more than the Best Junior and Reserve Best Junior is unclear.

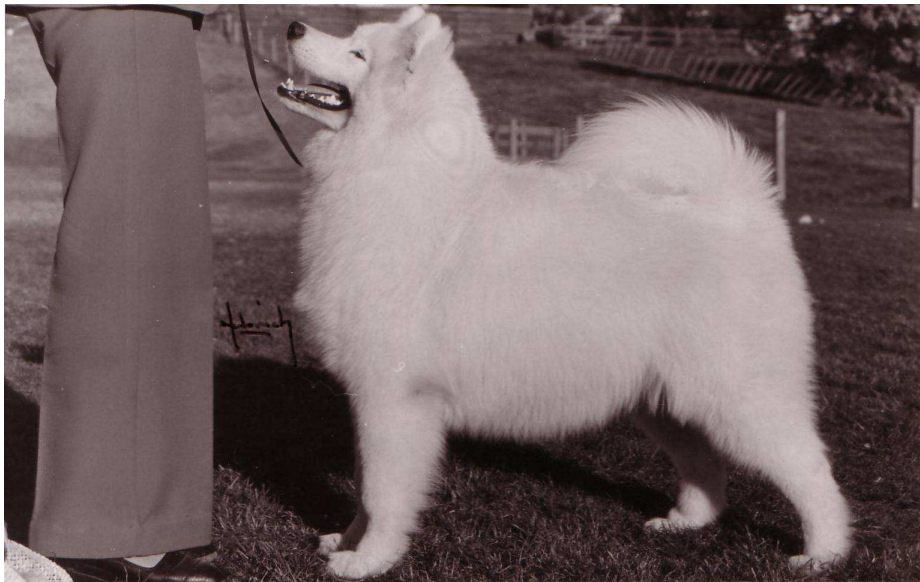
By 1966 the prize money had increased to £25 for Best in Show, £10 for Reserve Best in Show, and £10 for Best Puppy in Show. In addition each winner received a trophy and a gold braided sash valued at £10.

Sponsors have been generous with their products for many years even back in the 1950s when for example in 1959 and 1960 all the winners of General Specials received a 25lb sack of Tomoana Full Feed Dog Food in addition to cash, sash, and cup.

By 1979 the prize money for Best in Show had risen to \$150 and that was still the going rate in 1987. The winner also received a perpetual cup and miniature, a trophy from the sponsor and gold braided sash. The Breeder of Best in Show received a trophy and gold braided sash whilst the Reserve Best in Show received \$25, a trophy and gold braided sash. The winner of Best Intermediate in Show received prize money of \$30, a trophy and sash, whilst the winners of Best Junior in Show and Best Puppy in Show each received prize money of \$30, a perpetual cup and miniature, trophy from sponsor, and a gold braided sash. The gold braided sashes were valued at \$50.

In 1990 it was stated on the schedule that the Tux National Dog Show had a budget allocation of \$8,500 for trophies, sashes, specially printed place cards and Challenge Certificates and substantial stakes awards.

In 1994 the winner of Best in Show won an all expenses paid trip to the 1995 Cruft's Dog Show.



Kimchatka Achilles (later Champion)
Best Puppy in Show 1981, Best Non Sporting 1981
(Pictured at 6 months 3 weeks)

Breeder/owner: Mr & Mrs T A R Maitland (handled by Mrs Elle Maitland)
Sire: Whitewisp Arrogance
Dam: Novaskaya Tsarina Lafay (Imp UK)



NZ Ch Kimchatka Laced With Ice (Imp Aust)
Best in Show and Best Junior in Show 1998

Owners: Mrs G Grey and Mrs J Hawkins (handled by Mrs Glenys Grey)
 Breeders: Mrs E Maitland & Mr & Mrs D Brown
 Sire: Aust Ch Kimchatka Touch of Class
 Dam: Aust Ch Mihalichenka La Contessa

*Photo courtesy Dominion Post Collection, Alexander Turnbull Library, Wellington, New Zealand.
 Ref. Dom/1998/0906/1/05*



Skrownek Sev Kazan (later Champion)
Best Puppy in Show 2002

Breeder/Owner: Ms S Stewart
 Handler: Ms Julie Wells
 Sire: NZ Ch Sever Imperial Shah (Imp Aust)
 Dam: Ch Kursharn Shah Mashenka

Judging order for Best in Show

In 1957 the order of judging for Best in Show was: Best Dog in Show, Best Bitch in Show, Best in Show, Reserve to Best in Show, Best Puppy in Show, Reserve to Best Puppy in Show, Best Junior in Show and Reserve to Best Junior in Show. It is interesting to note that Best in Show was awarded to a German Shepherd, who had won Division 1 of the Non Sporting Group, and the Reserve to Best in Show went to a Miniature Poodle, the winner of Division 2 of the Non Sporting Group.

For some years it was customary for two judges to take part in judging Best in Show and that occurred at the 1962 National.

As mentioned earlier new regulations were passed by Executive at its April 1964 meeting. The In Show award judging was as follows: Best in Show, Reserve Best in Show, Best Puppy in Show and Best Junior in Show.

The 1968 National Show was an example of how the judging process changed only for that show. That year, at the show manager's suggestion, a new system of judging and announcing the winners was undertaken. This was to provide a more dramatic climax to the "In Show" judging. *"The group winning puppies and juniors, Best and Reserve to Best in Group were all brought into the ring together and placed with the puppies on one side, the juniors on the opposite side and the Best of Group and Reserves on the third side opposite the trophy table"*.

The judge then proceeded to judge the puppies, the juniors, and then Best in Show, and recorded all his awards but his decision was unknown and not announced until after the trophies for winner of Test C Obedience and the Gundog Trial had been presented. First to be announced was Best Puppy in Show, then Best Junior in Show, then Reserve to Best in Show, and finally Best in Show.

In 1987 the order of judging was Best Puppy in Show, Best Junior in Show, Best Intermediate in Show and Best in Show. However, when it came to judging Best in Show a new procedure was introduced. All six group winners were paraded in the ring and placed by the judge in Order of Merit from 1 to 6. The placings were announced in reverse order. The awards made were called 1st Best in Show, 2nd Best in Show, 3rd Best in Show, 4th Best in Show, 5th Best in Show and 6th Best in Show. There was not an award titled Reserve Best in Show.

Reserve Best in Groups unless required for other judging were not required to attend the General Specials judging.

To my way of thinking such a way of judging is nonsense. In essence it means that the dog selected

for 2nd Best in Show had not met the dog who had been Runner Up in Group to the Best in Show winner. Therefore in the strictest sense that dog could not be referred to as the 2nd Best in Show. The same comments apply to the 3rd, 4th, 5th and 6th Best in Show places as they had not competed against the Runner Up in Group to either the Best in Show winner or the 2nd Best in Show winner.

If that judging procedure had been in operation in 1967 we would not have seen Ch Kalina Smirnoff (Imp Aust) win Reserve Best in Show. That was not the first instance when both the Best in Show and Reserve Best in Show came from the same group - in 1957 as mentioned previously and in 1960 when both winners came from the Gundog group - and there may well be other instances.

The same process for Best in Show judging applied in 1988 but in 1989 the process was referred to as per NZKC regulations.

At the 1997 National the order of judging the "In Show" specials caused some heated discussion. Judging commenced with Best Puppy in Show, followed by Best Junior in Show, Best Intermediate in Show, Best Open in Show, and culminated with Best in Show and Reserve Best in Show.

The following extracts are from the editorial in the New Zealand Kennel Gazette October/ November 1997:

"It is interesting to note that this so-called reverse order was in fact the order of judging followed in NZ for almost 100 years. It was altered, then reverted to the original system and then altered again over a five year period about 15 years ago."

"The main argument for judging Best in Show and also Best of Group first was that it avoided the possibility of a reversal by the judge, and once the subsequent automatic elevation of the Best in Show and Best of Group to the winner of Best of its age class as well, the possibility of having all beaten dogs in the ring for Best in Show was eliminated."

"The main argument in favour of judging Best in Show and also Best of Group last is that it builds the show to a climax which is both exciting and entertaining. Sometimes, as happened at this year's National there is only one unbeaten dog left by then and that is a great pity, but is exactly the same result as would have happened if the judging order had been as usual."

"Another argument for leaving the best till last is that it gives the winners of Best of Breed in other classes (Puppy, Junior, Intermediate etc) a chance to parade their dogs in the public eye."

In Show Wins

Year	Award	Winner	Owner
1967	Reserve Best in Show	Ch Kalina Smirnoff (Imp Aust)	Mr & Mrs N K Fraser
1975	Best Puppy in Show	Yevgeny of Kazache	Mrs G Hunt
1981	Best Puppy in Show	Kimchatka Achilles #	Mr & Mrs T A R Maitland
1998	Best in Show	NZ Ch Kimchatka Laced With Ice (Imp Aust)	Mrs G Grey & Mrs J Hawkins
1998	Best Junior in Show	NZ Ch Kimchatka Laced With Ice (Imp Aust)	Mrs G Grey & Mrs J Hawkins
2002	Best Puppy in Show	Skrownek Sev Kazan #	Ms S Stewart
2004	Best Baby Puppy in Show	Silvertips Destind To Dazzle	Mrs J McCormick

Note:

1. No Samoyed has won Best Intermediate in Show or Best New Zealand Bred in Show at a National Show.
2. Names of owners are shown as printed in the relevant catalogue. Ownership is known to have changed in some instances since that time.

See the Summer 2008 issue for successes in All Breed Stakes, Agility and Obedience.

References

The reference list is too lengthy to publish here but is abbreviated as follows:

National Show catalogues 1955 to 2003

New Zealand Dog World/New Zealand Kennel Gazette 1955 to 2007

NZ Dog World November 2008

The Dominion Samoyed Club (Inc) magazine 1957-2008

The Samoyed Club Inc magazine 1969 to 2003

ANZSAMS emails 1999 to 2007

Acknowledgement:

Many thanks to the Alexander Turnbull Library for providing the photos of NZ Ch Kimchatka Laced With Ice (Imp Aust). These were provided on the understanding neither photo would be used on the cover of the magazine.

Thanks also to those who have provided photos for this feature.

Guess Who

Answer in Summer/Christmas 2008 issue



Christmas messages



It's time to give some thought to your Christmas message.

Remember the deadline for contributions to the Summer/Christmas issue is **Monday, 8 December**.

Please help make the issue a really festive one.

Lauren de C James
Editor



Snowdance To Be A Prince

~ Buddi ~

5-09-1994 - 11-09-2008

*I'll whisper words of love to you so you will always know.....
How much my heart is breaking now as I gently let you go.
I cannot watch you suffer now, my love is much to deep.
So close your eyes my dearest love, I'll hold you while you sleep.*

Will be deeply missed by all at Wytekloud

Condolences to the McRae family and to any others who have suffered a loss recently.

Bits 'n pieces from here'n there

A good laugh and a long sleep are the best cures in the doctor's book. - Irish Proverb

One time a windshield wiper will work properly is when it is holding a parking ticket. - Unknown

Money still talks, but if the value of the dollar keeps dropping, it will be talking in a whisper. - Unknown

Dog Show Disease - This Looks Like a Bad One!

New Human Disease...Latest Alert from Cornell University

We have identified a new disease, probably caused by a virus among dog-owning people. It apparently has been in existence for a considerable time, but only recently has anyone identified this disease and begun to study it. We call it Acquired Canine Obsessive Syndrome (ACOS).

At first, ACOS was considered to be psychological in nature, but after two young researchers here suddenly decided to become show breeders, we realized that we are dealing with an infectious agent. Epidemiologists have identified three stages of this disease and typical symptoms, listed below:

Stage 1 - You have early symptoms if:

1. You think that any show within 300 miles is nearby.
2. You begin to enjoy getting up at 5 AM to walk and feed dogs.
3. It is fun for you to spend several hours a day grooming dogs.
4. You think you're being frugal if you spend less than \$3,000 a year on shows.
5. You can't remember what it was like to have just one dog.

Stage 2 - You definitely have the disease if:

1. Your most important factor when buying a car is how many crates you can fit in it.
2. When looking for a new home, the first thing you consider is how many dogs you can kennel on the property.
3. Your dog food bill is higher than your family's grocery bill.
4. You spend as much on veterinarians as you do on doctors.
5. You have no money because of showing dogs.
6. You have to buy more than one vehicle a year, because you keep burning out the 7-year or 70,000 mile warranty going to shows.
7. You have more pictures of your dogs than of your family.
8. Your idea of a fun vacation is to hit the show circuit.
9. Most of your conversations revolve around dogs.

Stage 3 - You have a terminal case if:

1. You wake up in the morning to find out that you put the kids in the crates and the dogs in the beds last night.
2. You know each dog's name and pedigree, but can't figure out who that stranger in the house is; it turns out to be your spouse.
3. Your neighbours keep insisting that those kids running around your house bothering the dogs are yours.
4. You keep telling the kids to 'heel' and can't understand why they won't, and why they keep objecting to the choke chain.
5. You cash in the kid's college trust fund to campaign the dogs.
6. You've been on the road showing dogs so long you can't remember where you live.
7. Your family tells you 'It's either the dogs or us;' you choose the dogs.

Do you have this dreaded disease?

Well, there is hope. In the course of our research, we have found that most cases seem to stop at Stage 2, and remain chronic. We have, with great difficulty, managed to acquire several Stage 3 ACOS patients. They are currently in our isolation wards, where we are studying them to gain a better understanding of this disease. It is a sad sight, seeing these formerly vibrant people as they shuffle around their rooms in endless triangle or L-patterns, making odd hand motions as if holding a lead and baiting a dog, and making chirping noises. Merely saying the word 'Crufts' can send them into an uncontrollable frenzy.

Unfortunately, there isn't much hope for these cases, but with time and research to further understand this disease; we hope to come up with a cure. We are now attempting to isolate the causative agent and may be able to develop a vaccine in the future. An interesting sidelight of this disease seems to be that exposure at an early age has an immunizing effect. Several people afflicted with ACOS at Stage 1 and Stage 2 have close family members (children/spouses) who have absolutely no disease. It is thought by some of our researchers that this may be due to environmental effects, to an age-related immune function, or to the fact that those with the disease tend not to associate with their close family members, possibly due to the memory deficit induced by the disease - that is, they don't remember they have close family members!

What can you do to prevent this disease?

Until a cure is found, prevention is the best measure. Avoid kennels advertising 'show stock,' since it may be the dogs that are the carriers of the disease. Leave town when there is a local show. If you inadvertently come into contact with an ACOS-afflicted person, leave as soon as possible (they do tend to cling) and thoroughly shower, preferably with a germicidal soap. If you are living with an ACOS sufferer, take comfort that if you haven't succumbed yet, you are probably safe.

Submitted by Lorraine Fothergill



Samoyed Club of Slovakia - SCS

Dear Club representatives,

We have sent you our invitation to the **2nd World Samoyed Meeting 2009** early this year. Since we have not get any reply from your Club and the deadline to enter this event is close, we would like to invite you again. This time we have more detailed information available, since the Slovak Kennel Club has finally announced **exact dates** of the World Dog Show 2009 in Bratislava, Slovakia. Now we have managed to prepare excellent program for those who will attend this Special Event, as you can see below.

The 2nd World Samoyed Meeting 2009 consists of 4 events / 4 days:

1. 8th October 2009 (Thursday)

FCI World Dog Show in Incheba Exhibition Centre in Bratislava (you can exhibit your Samoyeds on this prestigious Show or just visit it, we expect the Entry of about 100 Samoyeds). More information, entry fees, judges, deadlines: www.skj.sk

Festive dinner – Opening of the World Samoyed Meeting in the evening (with Top Samoyeds PC presentations).

2. 9th October 2009 (Friday)

Samoyed Club of Slovakia Annual Club Championship Show in Kamenný Mlyn Vajarský, near Bratislava (you can exhibit your Samoyeds on this Show or just visit it). Our Championship show includes these important awards: CAC, CAJC, CC, Club Winners, BIS titles are on offer. We are delighted to have international Judges, John and Kathy Ronald, Seadog Samoyeds, the USA to officiate. To include special Slovak Dinner, Dancing and the Samoyed Cake competition in the evening.

Accompanying event:

SCARF (The Samoyed Club of America Education and Research Foundation) DNA collection. Let's help in building the biggest DNA world wide Samoyed database! (www.samoyedhealthfoundation.org)

3. 10th October 2009 (Saturday)

the World Samoyed Conference in Kamenný Mlyn Vajarský, near Bratislava as the gathering of Samoyed Clubs, Samoyed breeders and fanciers. There will be Club Stalls, Club presentations and special speeches and presentations.

The List of speakers – specialized speeches and workshops: **Dr. Renata Fossati, Italy:** 'Samoyed as a Therapy Dog with disabled people', **Dr. Lorna Kennedy, GB:** 'The Samoyed breed and its predisposition for Diabetes and Hypothyroid problems', **Tuula Hämäläinen-Pratt, Finland:** 'The Samoyed as an allround dog in relation to its form and function', **Pam Taylor, GB:** 'The Samoyed of the past, present and future'.

Festive dinner – the Closing of the World Samoyed Meeting with raffle and/or silent auction in the evening.

4. 11th October 2009 (Sunday)

free day, we can manage a guided tour in Bratislava, the capital city of Slovakia for you, or you can visit the last day of the World Dog Show.

Venues and transport:

World Dog Show takes place in Incheba Exhibition Halls, in Bratislava, capital city of Slovakia. Bratislava is easy accessible via Bratislava Airport or Vienna Schwechat Airport – *Flughafen Wien - Schwechat* (<http://www.viennaairport.com/>), which is only about 40 kilometres from Bratislava (shuffle busses drive passengers from Vienna to Bratislava every hour).

All events of the World Samoyed meeting will take place in Kamenný Mlyn Vajarský, near Bratislava (about 25 kilometres from Bratislava). You can book your accommodation there already from Wednesday, October 7th.

It is easy to get from the Bratislava airport to Kamenný Mlyn by taxi. Then we can manage the bus shuffle driving the participants from Kamenný Mlyn to Incheba Exhibition Halls and back on Thursday, October 8, and Sunday, October 11, to visit Bratislava or the World Dog Show.

We are happy to announce, that so far we have **9 Clubs** from all around the world attending this special event and **many special presentations** from world-known breeders, judges, scientists. We would be happy if your Club will also participate.

Please let us know as soon as possible if you are willing to attend this special event. Then we will send you MORE DETAILED INFORMATION including your contribution, timetable with deadline terms and Hotel booking information, so you can book your accommodation in advance.

Please feel free to use any information from our web pages or Invitation Letters and Leaflets concerning this great event in your Club Magazines and/or web sites to promote it within your Club members.

Please do not hesitate to contact us if any questions.

We are really looking forward to meeting you all in Bratislava!
With best greetings,

Jana Fulierová

Ing. Jana Fulierová,
the Vice-President of the SCS
World Samoyed Meeting Coordinator



Ing. Jana Fulierová, Koplotovce 106, 920 01, Slovakia
00421337424852, 00421902162224, yoshi@stonline.sk,
www.samojed-klub.sk

The List of speakers – specialized speeches




(updated October 10, 2008)

1. **Dr. Renata Fossati, Italy:** Samoyed as a Therapy Dog with disabled people
2. **Dr. Lorna J. Kennedy, GB:** the Samoyed breed and its predisposition for Diabetes and Hypothyroid problems
3. **Tuula Hämäläinen-Pratt, Finland:** the Samoyed as an allround dog in relation to its form and function
4. **Pam Taylor, GB:** the Samoyed of the past, today and future
5. **Dr. Frank H. Comhaire, Belgium:** Understanding Hipdysplasia
6. **Brian N. Harris, New Zealand:** 'Lets get rid of the Samoyed standard'



Trophy table for the Open Show - August 2008

Breeder's Directory

 <p>Lynne Barr 4 Christopher Way Paparangi Wellington 6004 NEW ZEALAND</p> <p>Hm 04 47710 97 Mb 021 746 361 lynne@angara.co.nz</p>  <p>Bred For Purpose Est 1996</p>	<h3>Sunshine Samoyeds</h3>  <p>Anita & Ken Shugg 136 Waitohu Valley Rd RD1 OTAKI 6471</p> <p>All Breeding Stock are Hip Scored & Eye tested.</p> <p>Ph (06) 3645785</p> <p>Email: k.a.shugg@clear.net.net</p>
<h3>Web Page</h3> <p>http://www.thesamoyedclubinc.orcon.net.nz/</p>	